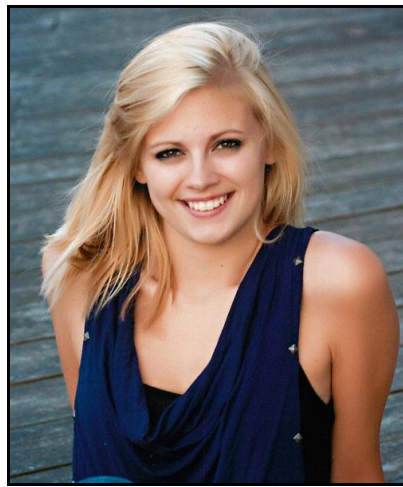


**PINNACLE 2017**  
**SENIOR PORTRAIT AND PERSONALITY PICTURE**  
**DUE NO LATER THAN FRIDAY, SEPTEMBER 30, 2016**

Beginning July 1, portraits and personality photos must be submitted through **Replayit.com**, a free service that allows you to upload your portraits and send them directly to the website we use to create the yearbook. Follow instructions at the site to register and send us your photos. Your photos will not be visible online. When prompted, tag the photo with the student's first and last name and whether it is a Senior portrait or Senior personality photo.

\*\*\*\*



**SENIOR PORTRAIT**

The following are the requirements for your Senior portrait:

- Portraits must be taken by a professional **or** high quality digital camera (this is due to the high resolution quality they have). You will not be able to upload your picture to ReplayIt.com if the resolution is too low. Please use this as your guideline.
- Traditional formal head and shoulder shot.
- Photo must be taken vertically, not horizontally.
- You must be facing the camera and sitting upright
- No hats or props are allowed

Geskus Photography, our contracted school photographer, is offering a limited session, which includes submittal of your yearbook image(s) to the yearbook staff. Please call them at 1-800-948-1120 or visit their website [www.geskuspublishing.com](http://www.geskuspublishing.com) for more information.

(Scroll down for more information)



## **SENIOR PERSONALITY PICTURE**

The following are the requirements for your personality picture:

- A picture that shows your true self. The picture can be professionally done or a candid shot. Black and white photos are okay for the personality photo.
- You will not be able to upload your picture to ReplayIt.com if the resolution is too low. Please use this as your guideline.
- Please take picture vertically, not horizontally.
- Make sure your picture is not suggestive or inappropriate. Your picture must follow student handbook policies and pass administrative approval.
- Choose a clear picture – not too dark or too light.
- If a picture is taken with an animal or pet, please take the picture so that the heads are side by side.

\*\*\*\*

**PINNACLE 2017 NEEDS BOTH YOUR SENIOR PORTRAIT AND PERSONALITY PICTURES  
NO LATER THAN FRIDAY, SEPTEMBER 30, 2016.**

**PICTURES RECEIVED AFTER THE SEPTEMBER 30, 2016 DEADLINE ARE NOT  
GUARANTEED TO BE INCLUDED IN THE YEARBOOK!**

Thank you!  
~ Mrs. Eide and Mr. Krauss