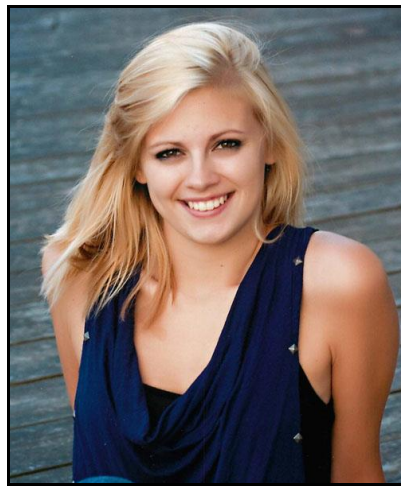


PINNACLE 2018
SENIOR PORTRAIT AND PERSONALITY PICTURE
DUE NO LATER THAN FRIDAY, SEPTEMBER 29, 2017

Beginning July 1, portraits and personality photos must be submitted through **Replayit.com**, a free service that allows you to upload your portraits and send them directly to the website we use to create the yearbook. Follow instructions at the site to register and send us your photos. Your photos will not be visible online. When prompted, tag the photo with the student's first and last name and whether it is a Senior portrait or Senior personality photo. For example: Jane Doe – Personality.



SENIOR PORTRAIT

The following are the requirements for your Senior portrait:

- Portraits must be taken by a professional **or** high quality digital camera (this is due to the high resolution quality they have). You will not be able to upload your picture to ReplayIt.com if the resolution is too low. Please use this as your guideline.
- Traditional formal head and shoulder shot.
- Photo must be taken vertically, not horizontally.
- You must be facing the camera and sitting upright
- No hats or props are allowed

Geskus Photography, our contracted school photographer, is offering a limited session, which includes submittal of your yearbook image(s) to the yearbook staff. Geskus will be at EHS on Wednesday, July 26, 2017, from 9 AM – 3 PM for scheduled appointments. Please call them at 1-800-948-1120 or visit their website www.geskuspublishing.com for more information.

(Scroll down for more information)



SENIOR PERSONALITY PICTURE

The following are the requirements for your personality picture:

- A picture that shows your true self. The picture can be professionally done or a candid shot. Black and white photos are okay for the personality photo.
- You will not be able to upload your picture to ReplayIt.com if the resolution is too low. Please use this as your guideline.
- Please take picture vertically, not horizontally.
- Make sure your picture is not suggestive or inappropriate. Your picture must follow student handbook policies and pass administrative approval.
- Choose a clear picture – not too dark or too light.
- If a picture is taken with an animal or pet, please take the picture so that the heads are side by side.

**PINNACLE 2018 NEEDS BOTH YOUR SENIOR PORTRAIT AND PERSONALITY PICTURES
NO LATER THAN FRIDAY, SEPTEMBER 29, 2017.**

**PICTURES RECEIVED AFTER THE SEPTEMBER 29, 2017, DEADLINE ARE NOT
GUARANTEED TO BE INCLUDED IN THE YEARBOOK!**

**THE PINNACLE STAFF WILL USE YOUR STUDENT'S SCHOOL PICTURE IF NO PICTURES
ARE SUBMITTED.**

Thank you!
Mrs. Eide